

SWISS SCOUT

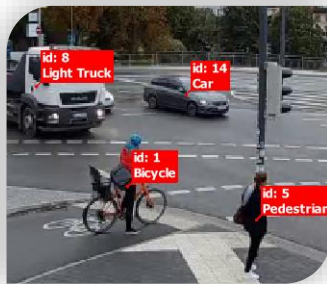
Real-time mobile counting of multimodal traffic

v.1.4-May-2020

For mobile counting of **multimodal traffic** in **real-time** as well as for **node current counting**, we have specially developed the **swiss SCOUT** to meet the highest demands in counting accuracy. Due to the adjustable very high resolution, the automatic wind stabilization, the exceptionally high light sensitivity, and the telescopic antennae, which is extendable up to 7m, the swiss Scout is very reliable and AI-compatible even in extreme situations.



Our specially developed **Artificial Intelligence** AI software **swiss ANALYTICS** allows automated evaluation of the multimodal counts in real-time on-site and very accurate recording. With the **swiss ANALYTICS** the **swiss SCOUT** enables real-time assessments through **edge-computing** with fully GDPR-compliance.



swiss SCOUT with 2MP camera, telescopic antenna (up to 7m) and battery pack



- ➔ Counts up to 2-8 days without a battery change
- ➔ Embedded Artificial Intelligence AI for real-time analysis
- ➔ O/D-matrix at intersections, roundabouts, pedestrian zones, train station, airports including pedestrians or passengers
- ➔ Cloudbased dashboard with API-services

Added values

Detects ALL road users including bicycles and pedestrians. With our embedded AI-Software for automatic analysis of your video streams in real-time:

- ✓ Counts up to 8 vehicle classes
- ✓ Queue estimation and travel times
- ✓ Anonymized 24h people detection (no face recognition) with age and sex determination
- ✓ Record transfer relationships at public transport hubs and airports
- ✓ Determine dwell times and walking routes (origin-destination matrix)
- ✓ Complies with EU and CH data protection guidelines GDPR

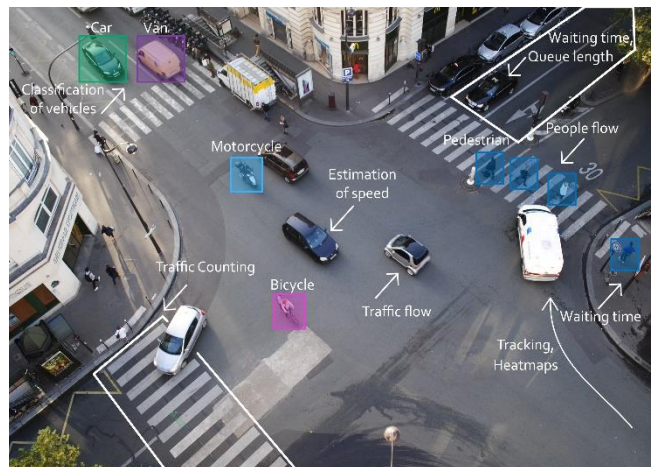
SWISS SCOUT

Technical specifications

v.1.4-May-2020

Weight	10 kg
Energy consumption	Max. 10 W
Operating temperature	-20°C / +50°C
Camera	2 MP, 2.8mm focal length, lens, 120°
Dehumidification	Integrated
Communication	Ethernet, WLAN, 4G, LoRa
Image resolution	Up to 1920x1080@30fps
Internal memory	Micro SD 512 GB to 1 TB
Photosensitivity	0.0003 Lux ideal for night shots
Day & Night	Electronic
Elect. stabilized	Min. of motion blur
Video compression	H.265/H.264/MJPEG
Behavior Analysis	Detection of: line crossing, intrusion, unattended baggage, object removal
Smartphone App	For camera and survey settings
Remote access	Through GPRS 4G
Alarm Trigger	Motion, HDD error
Battery packs	40 Ah (LiFe): for at least 2 days measuring capacity 120 Ah (LiFe): for at least 8 days measuring capacity

Solar kit	As a supplement to the battery pack for permanent independent operation: <ul style="list-style-type: none"> ▪ Solar panel 2x100W, 18V, 10A (1.0m x 0.7m) incl. pole mount bracket ▪ Conversion Battery pack incl. MPPT 10A, 18V
Analytics	Embedded Artificial Intelligence Software for real-time analysis
Dashboard	In our cloud-server with API-services
Warranty	Up to 3 years



CONTACT **SWISSTRAFFIC AG**
 Stampfenbachstrasse 57
 8006 Zurich
 Switzerland
 +41 44 200 90 20
 swisscout@swisstraffic.com
 www.swisstraffic.com

Alain BÜTZBERGER
 Founder



SWISS SCOUT

Real-time mobile counting of multimodal traffic

v.1.4-May-2020

That makes the **swiss SCOUT** unique:

1. Tested and recommended by traffic engineers
2. Full HD camera 1920x1080, wide-angle 120°, 2 MP, 30 fps, 0.0003 Lux also suitable in the dark, -20 to +50 degrees, digit. shutter electrical stabilizer and day/night modus
3. Carbon telescopic antenna extendable up to 7m
4. Convenient setup via WLAN with smartphone app
5. SD card with 512 GB recording capacity (optional 1 TB)
6. Battery pack (40Ah battery) provides recordings up to 2 days. With additional Battery Pack up to 8 days.
7. Anonymized 24h people detection (no face recognition) with age and sex determination
8. Complies with EU and CH data protection guidelines GDPR
9. Record transfer relationships of passengers at public transport hubs and airports
10. The **swiss ANALYTICS** software with AI can also be used as plug&play solution for existing camera infrastructures

Pricing

Please contact us for an offer

CONTACT

SWISSTRAFFIC AG
Stampfenbachstrasse 57
8006 Zurich
Switzerland
+41 44 200 90 20
swisscout@swisstraffic.com
www.swisstraffic.com

Alain BÜTZBEGRER
Founder

